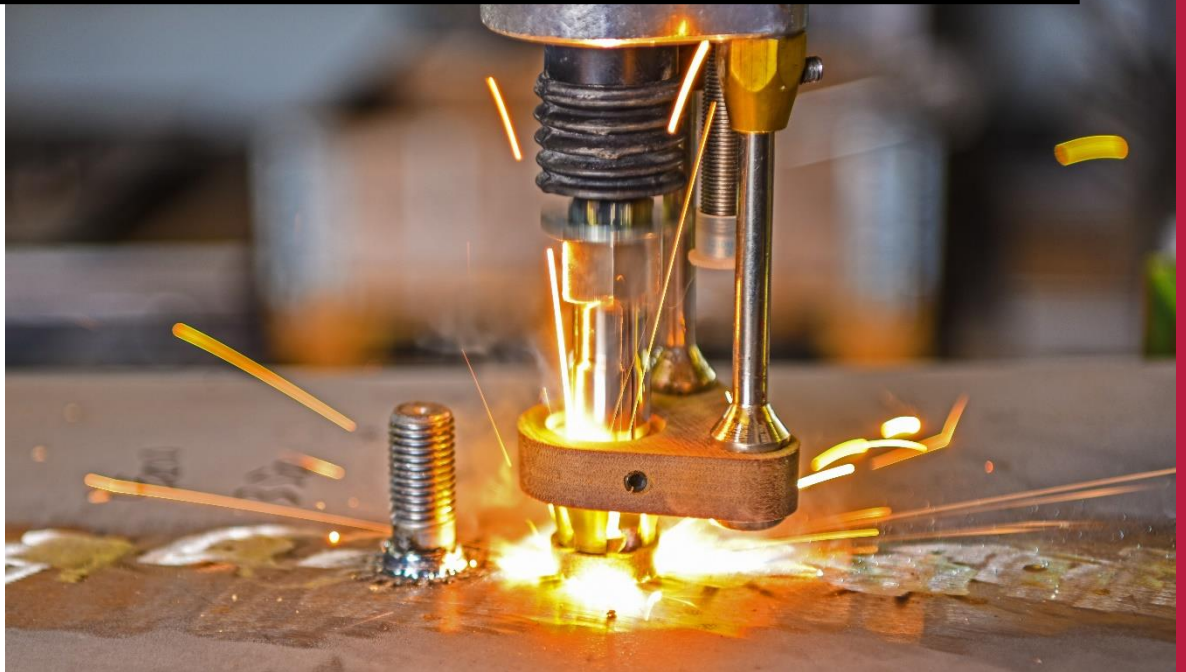




HIGH SPEED FASTENING SYSTEMS with stud welding



Ausgabe: 2021 electro

Sprache: English

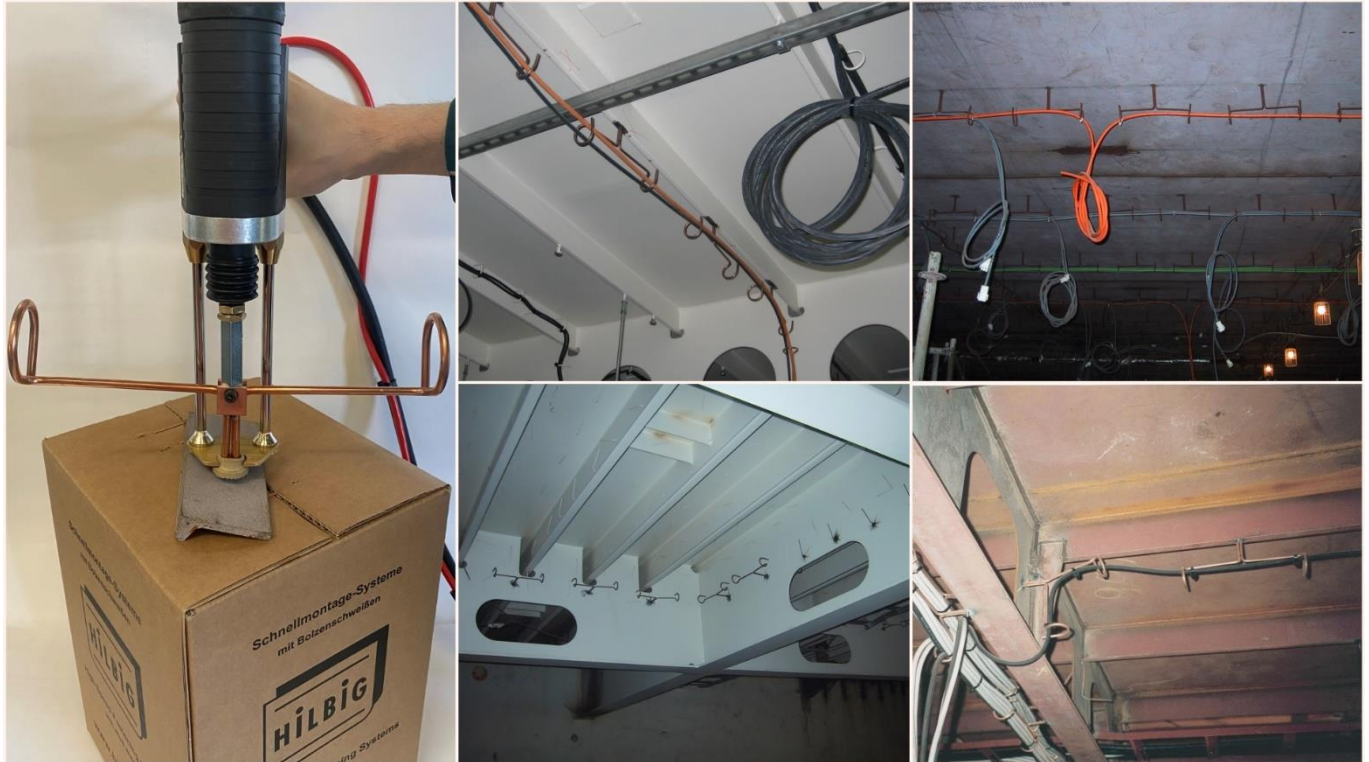


Table of Contents

Electrical installation	2
cable hanger type HDO	3
cable hanger type HDS	4
cable hanger type HDO for aluminium area.....	5
flat bar type HFS 30	6
flat bar type HFS 50	8
flat bar type HFSg open	9
flat bar type HFSg closed	10
electro ground plate type HNA	11
electro ground plate on customer requirement	13



Application example Type HDO



Easy and safe welding of cable hanger using drawn arc welding according to EN ISO 14555

Almost no heat input into base material when welding cable hangers

For use in steel construction, Cr-Ni-construction and aluminium construction

Welding without restriction is possible in all the usual stud welding positions (floor, wall, ceiling)

Good conservation properties possible due to small diameter of the cable hangers

Shock resistant

Fast and easy installation of cables by laying the cables on or pulling the cables through cable hangers

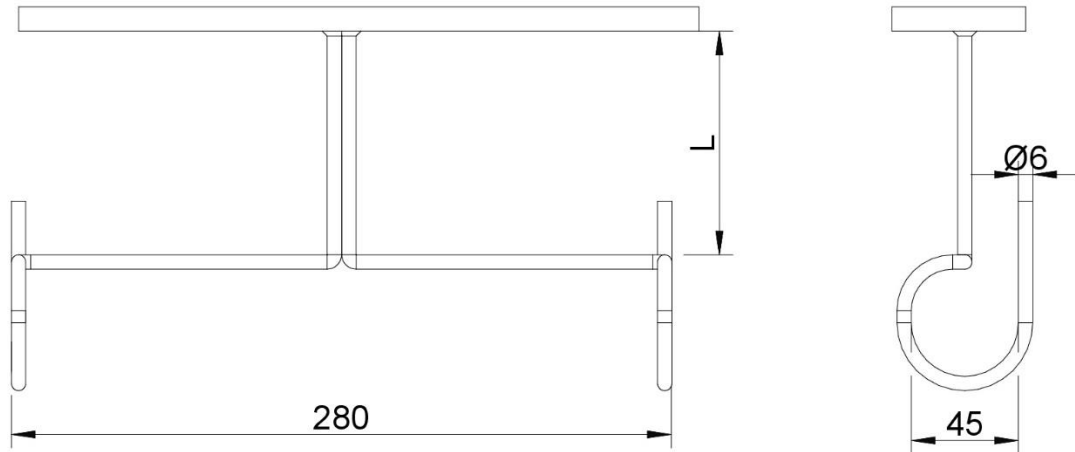
Simple fastening of cables using cable ties

K2021-2-E-e

Hilbig GmbH • Postweg 204 • 21218 Seevetal • Germany



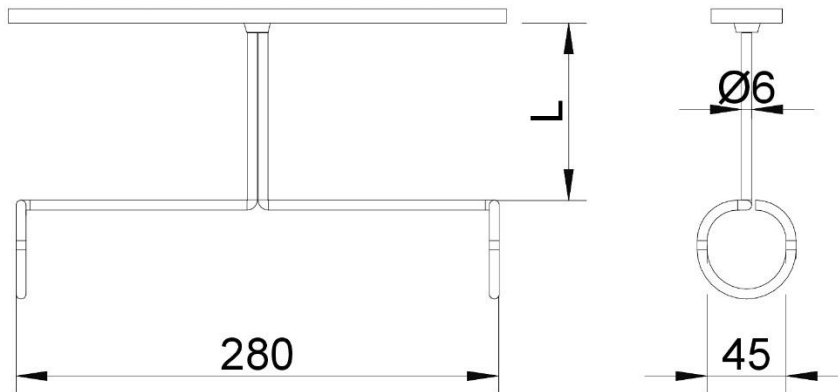
Electrical installation
cable hanger type HDO



Description	Part-no.	PU	L	material
HDO60	H12225	150	60	4.8 C2E
HDO100	H12226		100	
HDO150	H12317	100	150	
HDO250	H12227	75	250	
HDO60	H12294	150	60	1.4301
HDO100	H25248		100	
HDO150	H25247	100	150	
HDO250	H12295	75	250	



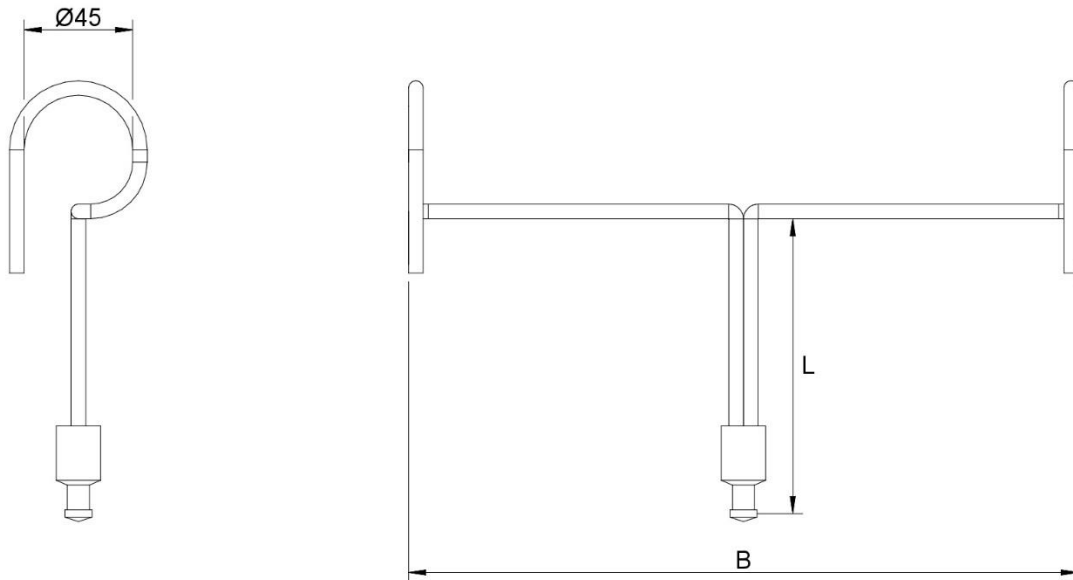
cable hanger type HDS



description	part-no.	PU	L	material
HDS 60	H11757	150	60	4.8 C2E
HDS 100	H11768		100	
HDS 150	H14098	100	150	
HDS 250	H11770	75	250	



cable hanger type HDO for aluminium area



description	part-no.	L	PU	material
HDO 80 alu	H14117	80	150	AlMg/4.8 C2E
HDO 120 alu	H13921	120	100	
HDO 170 alu	H25114	170	100	
HDO 270 alu	H25148	270	75	

K2021-5-E-e

Hilbig GmbH • Postweg 204 • 21218 Seevetal • Germany



Application example flat bar Type HFS



Easy and safe welding of flat bar using drawn arc welding according to EN ISO 14555

Almost no heat input into base material when welding flat bars

For use in steel construction, Cr-Ni-construction and aluminium construction

Welding without restriction is possible in all the usual stud welding positions (floor, wall, ceiling)

Good conservation properties possible due to small diameter of the flat bars

Very good corrosion protection through use of galvanized steel

Fast and easy installation of cables by laying the cables on the flat bar

Simple fastening of cables using cable ties

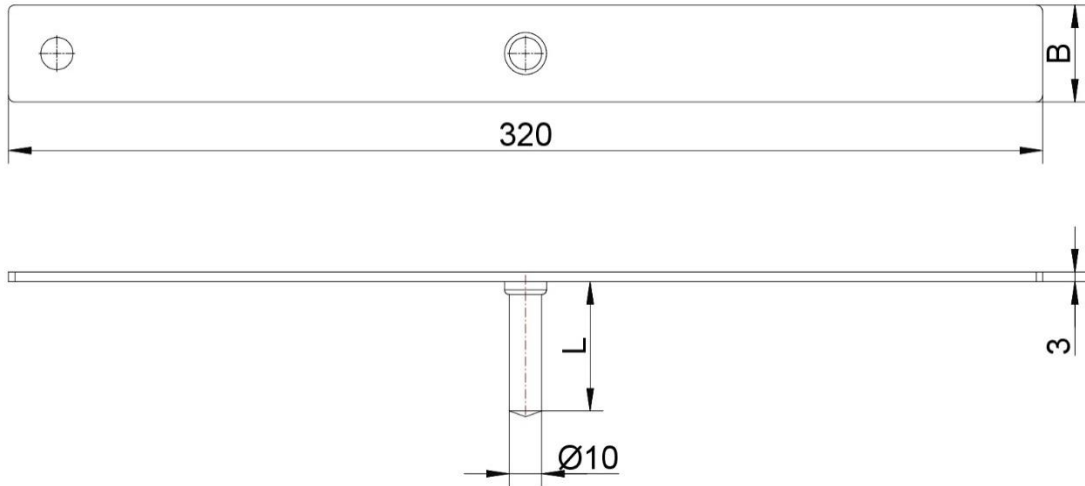
High flexibility for our customers' requirements through our production facility in Germany

K2021-6-E-e

Hilbig GmbH • Postweg 204 • 21218 Seevetal • Germany



flat bar type HFS 30

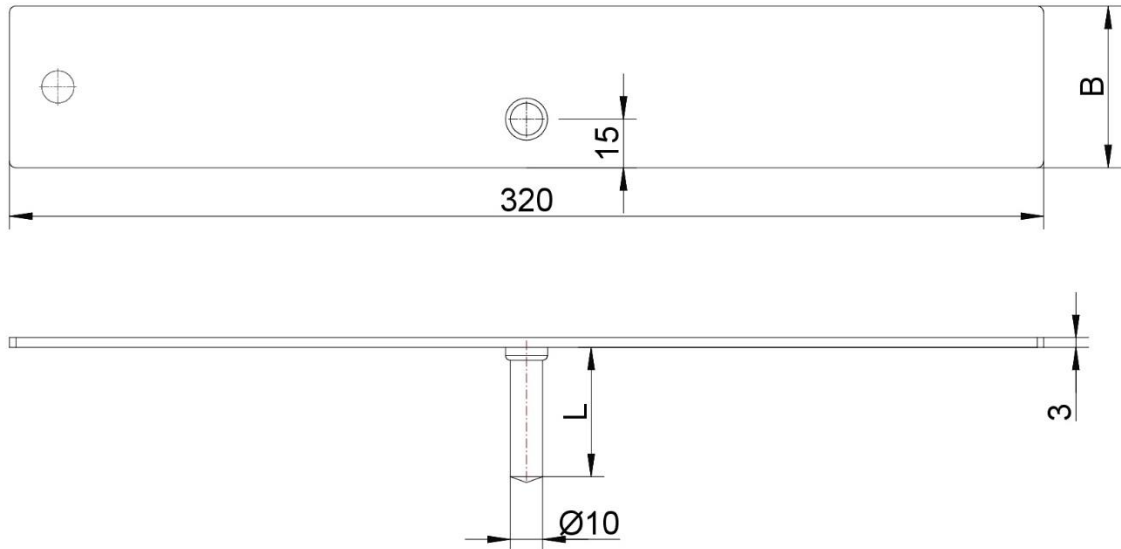


description	part-no.	dimension		PU	material	
		B	H			
HFS 30/320/40	H11396	30	40	100	S235JR+A2K	
HFS 30/320/60	H13884		60			
HFS 30/320/80	H12287		80			
HFS 30/320/100	H25099		100			
HFS 30/320/120	H11559		120			
HFS 30/320/40	H25235		40		S235JR+TZN	
HFS30/320/120	H25240		120			
HFS30/320/40	H25590		40			1.4301
HFS30/320/120	H25388		120			
HFS30/320/40	H26008		40			1.4571
HFS30/320/120	H26029		120			
HFS 30/320/60	H26079		60		AlMg	

other materials or dimensions on request



flat bar type HFS 50



Description	Part-no.	dimension		PU	material
		B	H		
HFS 50/320/40am	H25019	50	40	50	S235JR+A2K
HFS 50/320/80am	H12288		80		
HFS 50/320/120am	H25577		120		
HFS 50/320/40am	H25621		40		S235JR+TZN

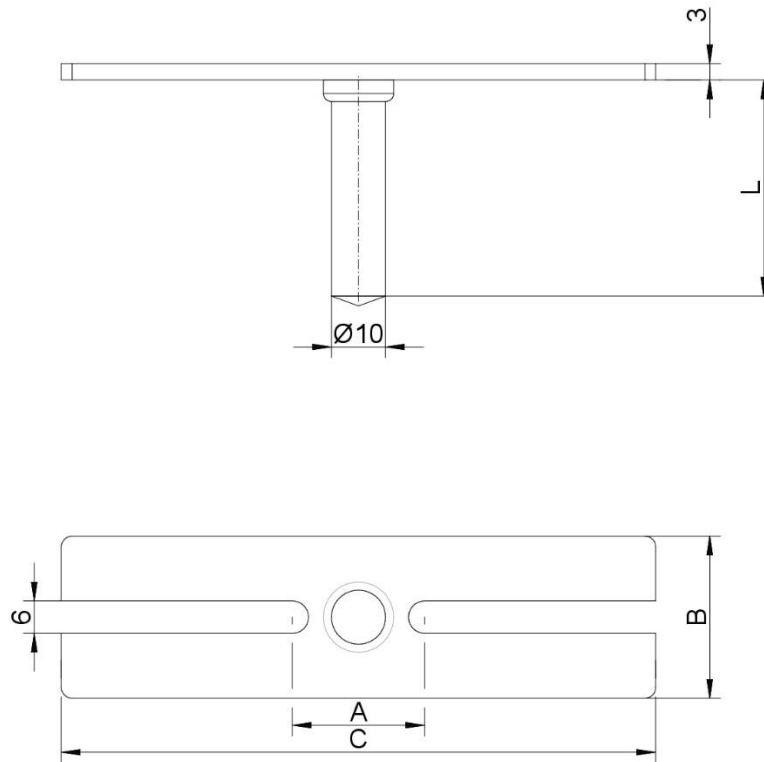
other materials or dimensions on request

K2021-8-E-e

Hilbig GmbH • Postweg 204 • 21218 Seevetal • Germany



flat bar type HFSg open



description	part-no.	dimension					PU	material
		A	D	L	C	B		
HFSg 30/90/40	H13484	24,5	10	40	90	30	100	S235JR+A2K
HFSg30/110/40	H13485	24,5			110			
HFSg30/130/40	H25263	28			130			

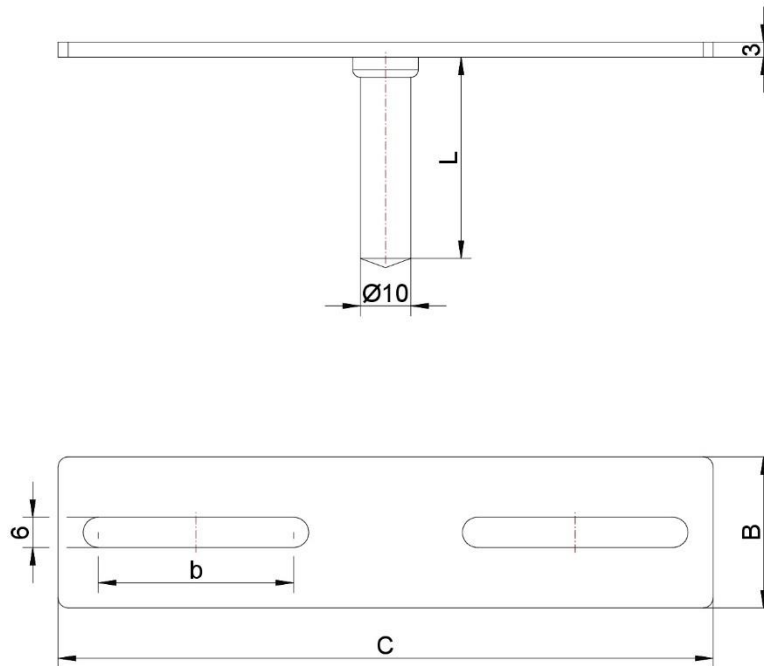
other materials or dimensions on request

K2021-9-E-e

Hilbig GmbH • Postweg 204 • 21218 Seevetal • Germany



flat bar type HFSg closed



description	part-no.	dimension					PU	material
		b	D	L	C	B		
HFSg 30/130/40	H25226	50,75	10	40	130	30	100	S235JR+A2K
HFSg 30/220/40	H25557	90	10	40	220			

other materials or dimensions on request



Application example ground plate Type HNA



Easy and safe welding of ground plate using drawn arc welding according to EN ISO 14555

Almost no heat input into base material when welding ground plates

For use in steel construction and Cr-Ni-construction

Welding without restriction is possible in all the usual stud welding positions (floor, wall, ceiling)

Good conservation properties possible due to small diameter of the ground plates

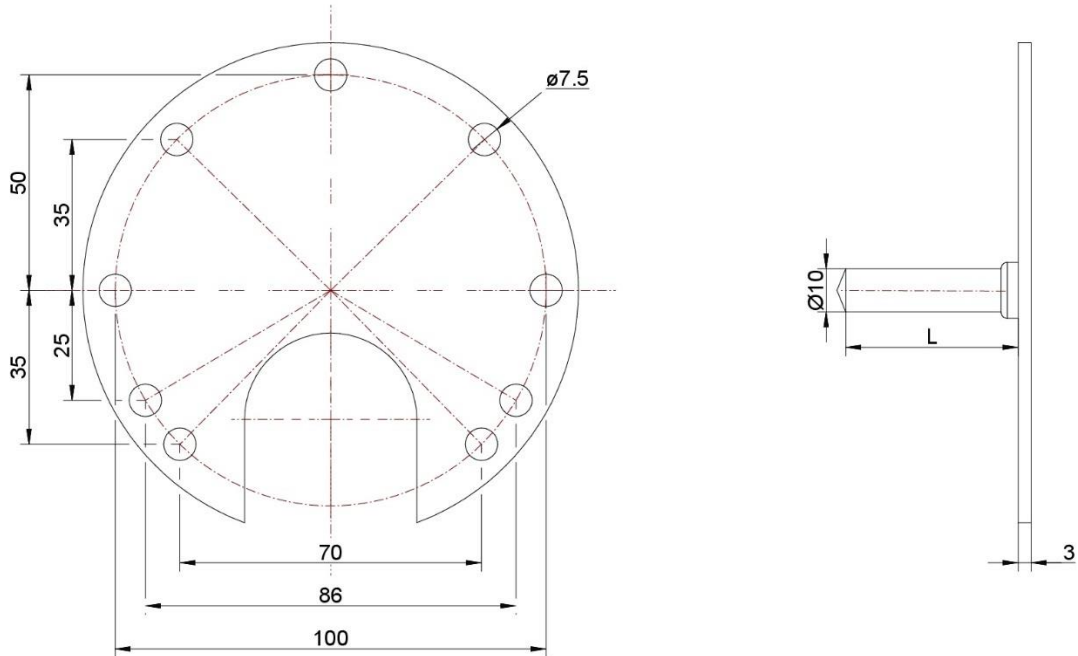
Very good corrosion protection through use of galvanized steel

Fast and easy installation of electro ground plates by screwing on ground plate using existing holes for screws

High flexibility for our customers' requirements through our production facility in Germany



electro ground plate type HNA



description	part-no.	L	PU	material
HNA-40	H11791	40	100	S235JR+A2K
HNA-120	H13080	120		
HNA-40	H25260	40		S235JR+TZN
HNA-120	H25751	120		

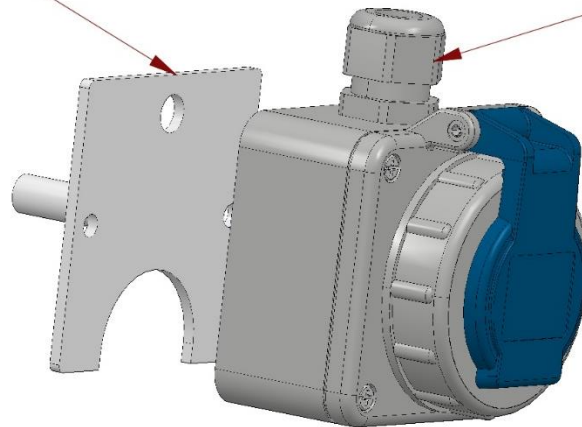
other materials or dimensions on request



electro ground plate on customer requirement

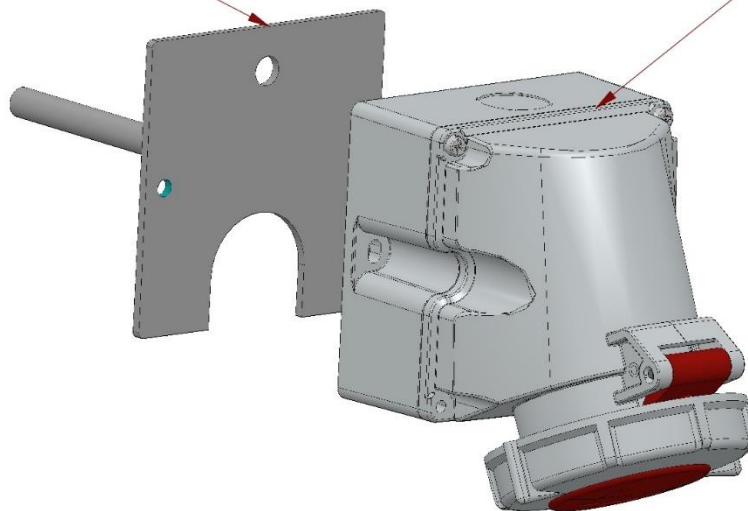
Montageplatte mit Bolzen Ø10x40
ground plate with Ø10x120

Wandsteckdose
wall socket



Montageplatte mit Bolzen Ø10x120
ground plate with Ø10x120

Wandsteckdose
wall socket



material: S235JR+A2K, S235JR+TZN, 1.4301, 1.4571

K2021-13-E-e

Hilbig GmbH • Postweg 204 • 21218 Seevetal • Germany